

# Peer Support Groups

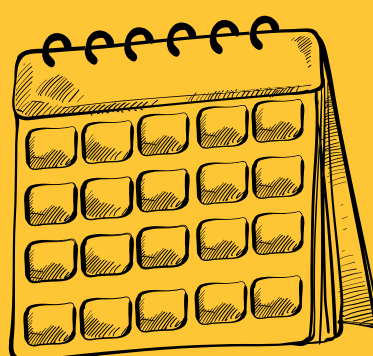
- Facilitated by **Certified Child Life Specialist**
- For **youth 13+**
- **Youth can register by visiting** [www.upopolis.com](http://www.upopolis.com), going to the youth page, clicking Join Upopolis, and then completing the form
- **Questions?** Email: [support@upopolis.com](mailto:support@upopolis.com)

## Scoliosis



**Last Monday** of the month at 7:15 pm ET next group **Jan. 26th**

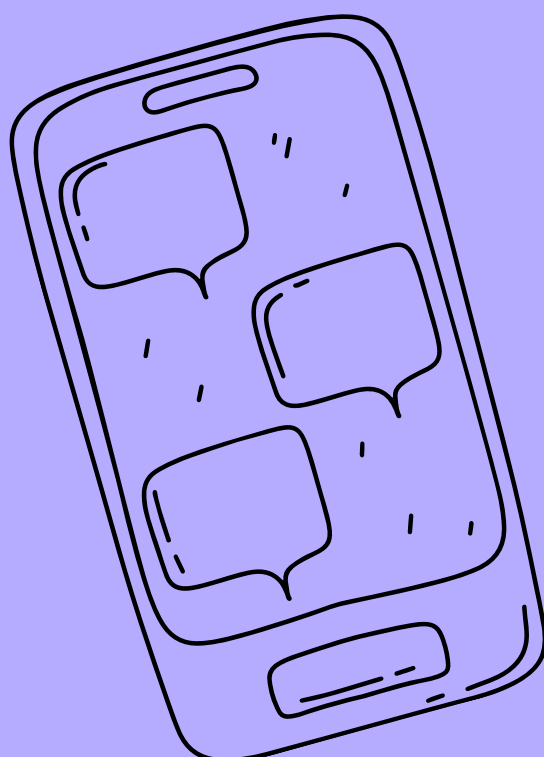
## Epilepsy



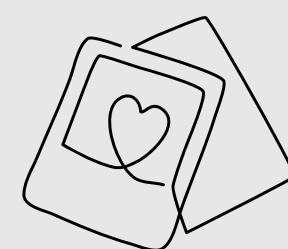
**Second last Monday** of the month at 7:15 pm ET next group **Jan. 17th**

## Diabetes

**Third Wednesday** of the month at 7 pm ET next group **Jan. 21st**

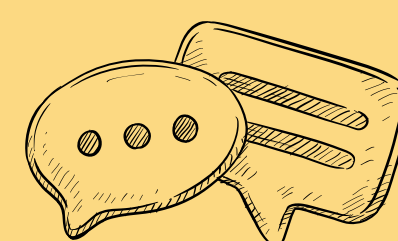


## Crohn's



Once a month on **Thursdays** next group **Jan. 29<sup>th</sup>** at 7:15 pm ET

## Cancer



Once a month on **Thursdays** next group **Jan. 29<sup>th</sup>** at 6:15 pm ET

## Cystic Fibrosis

**Last Monday** of the month at 6:15 pm ET next group **Jan. 26th**



## Youth of Adult Patients

**Last Wednesday** of the month at 6 pm ET next group **Jan. 28<sup>th</sup>**



## Grief



**Last Wednesday** of the month at 7 pm ET next groups **Jan. 28th**